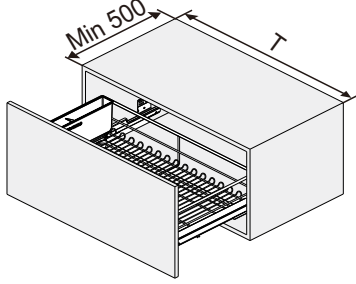


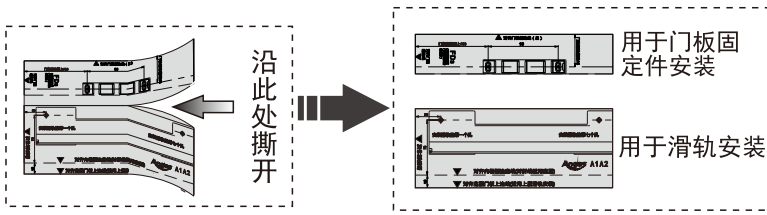
# 马丁·三边篮、三边碗碟篮 (安装说明书)



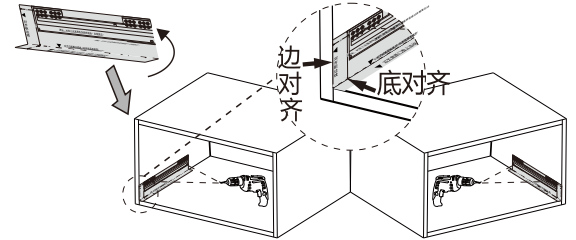
|                |                       |               |               |               |    |
|----------------|-----------------------|---------------|---------------|---------------|----|
| 配件<br>1        | 2a 2b                 | 3 x2          | 4a 4b         | 5 x2          | 6  |
| (安装模板)<br>7 x2 | 8 x20<br>(预装)<br>9 x2 | (预装)<br>10 x2 | 11 x2         | (预装)<br>12 x2 | 13 |
| 14             | (碗碟篮专配)<br>15         | (碗碟篮专配)<br>16 | (碗碟篮专配)<br>17 |               |    |

## 1 导轨安装

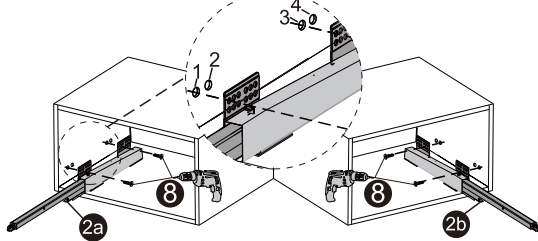
### 1.1 分开安装模板 (一分为二)



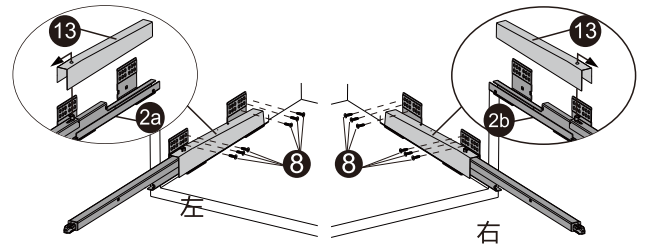
### 1.2 预钻滑轨定位孔 $\Phi 2.5 \times 4$



若柜已打预埋孔, 则滑轨的第一个孔与预埋孔的第一个孔对应安装

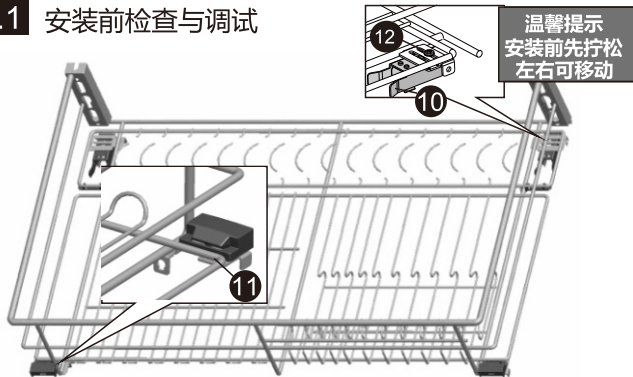


### 1.3 安装滑轨 (左/右)

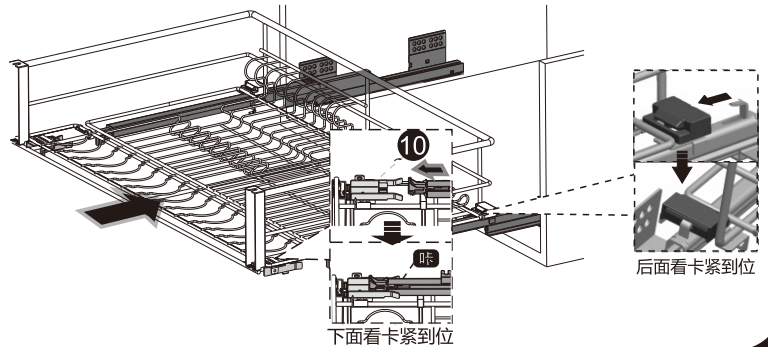


## 2 篮子安装

### 2.1 安装前检查与调试

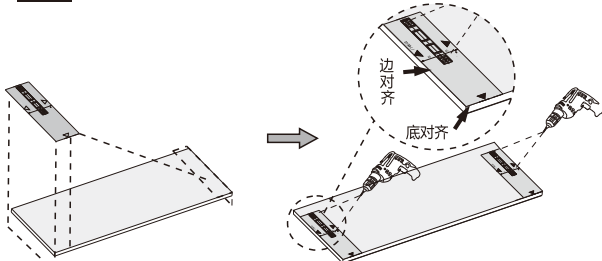


### 2.2 篮子安装导轨上, 安装篮子前把滑轨防尘盖拆除

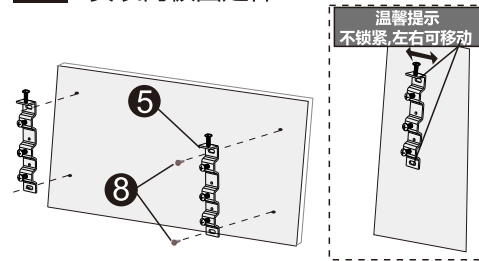


## 3 门板安装

### 3.1 用模板预钻门板固定件孔 $\Phi 2.5 \times 4$

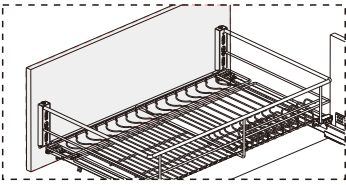
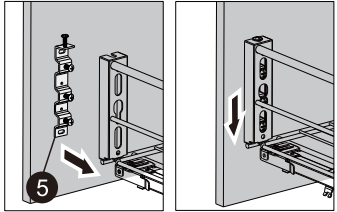


### 3.2 安装门板固定件

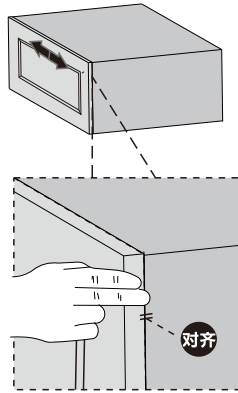


## 4 门板调试

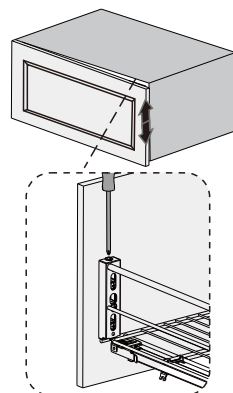
### 3.3 套上门板



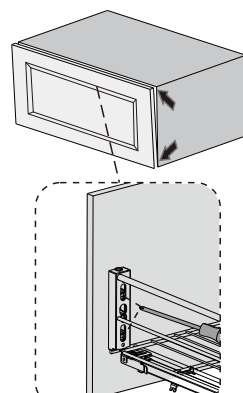
### 4.1 门板左右调节



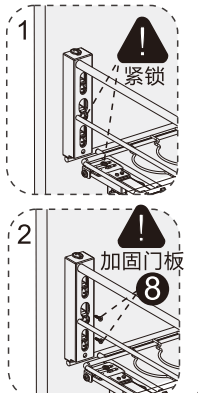
### 4.2 门板高低调节



### 4.3 门板垂直度调节

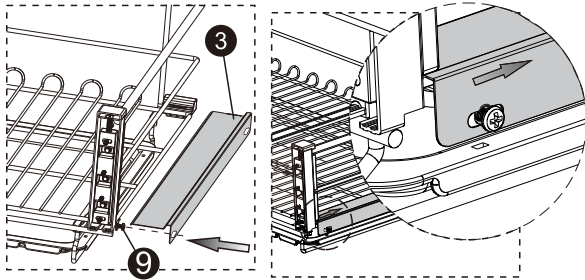


### 4.4 调节后锁紧

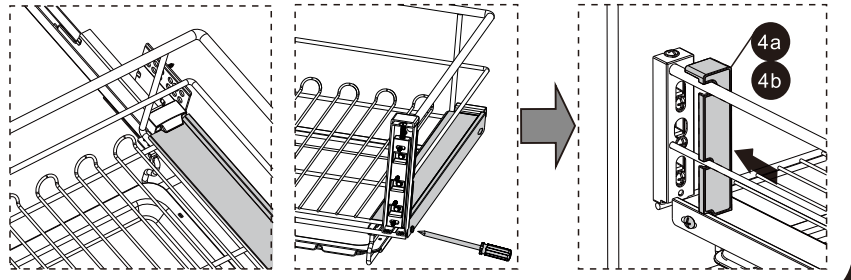


## 5 配件安装

### 5.1 滑轨装饰盖安装



### 5.2 门板装饰盖安装



## 6 套件安装

碗碟三边篮

平网篮

