

悍高 **HIGOLD**[®]

Creative Living, Soul !

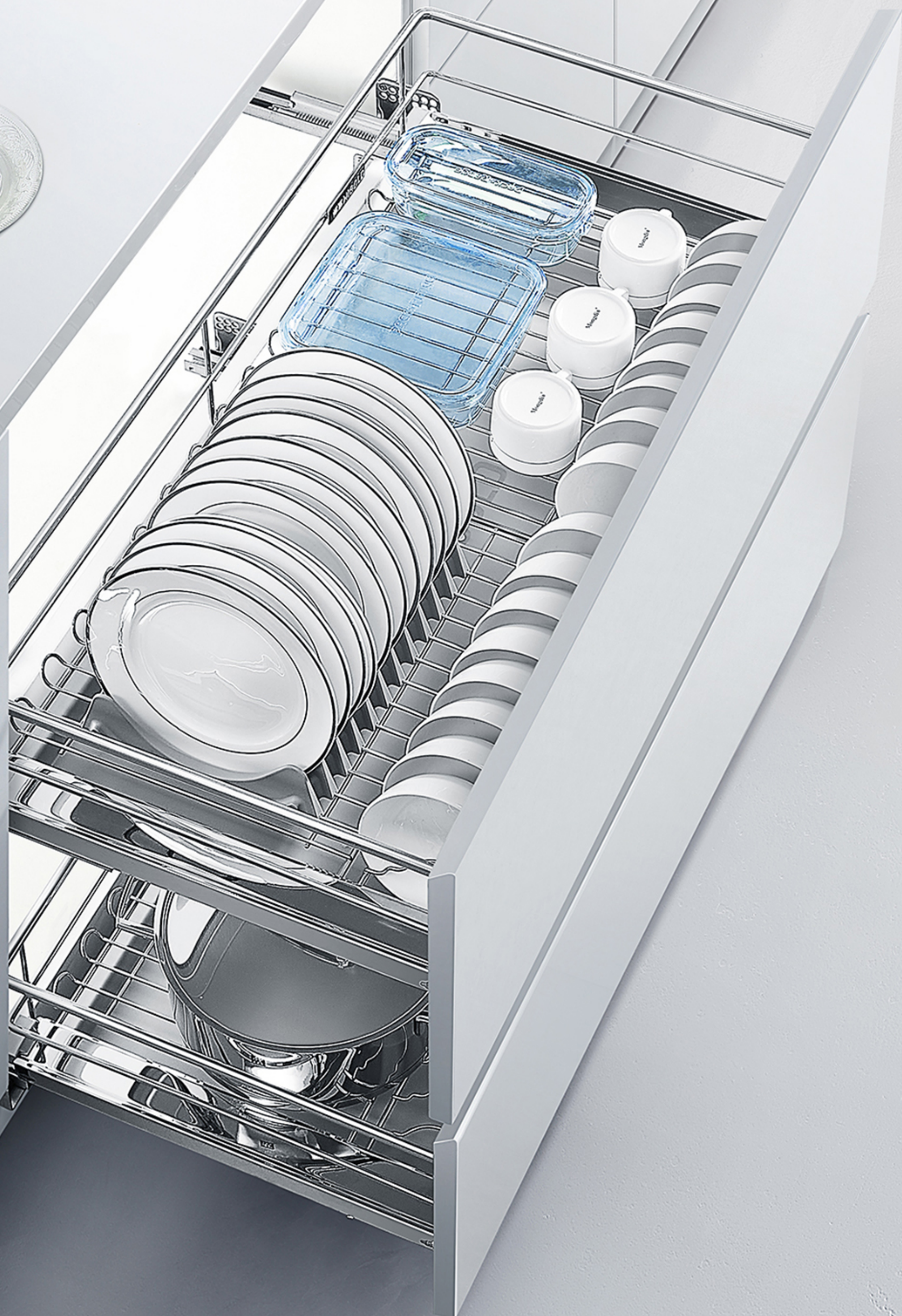
快速安装指南

M系列-平篮

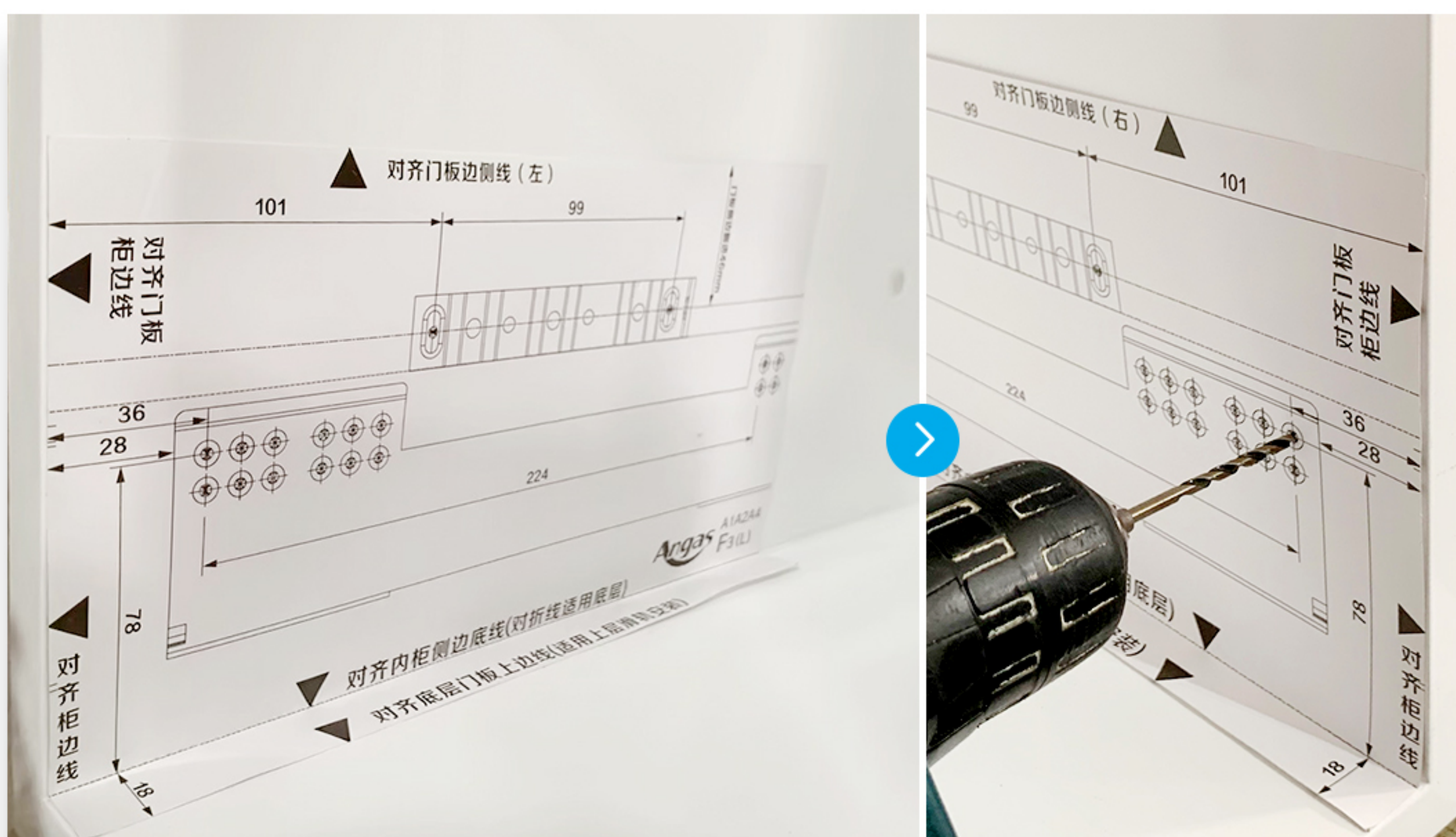


创意家居 · 灵魂！

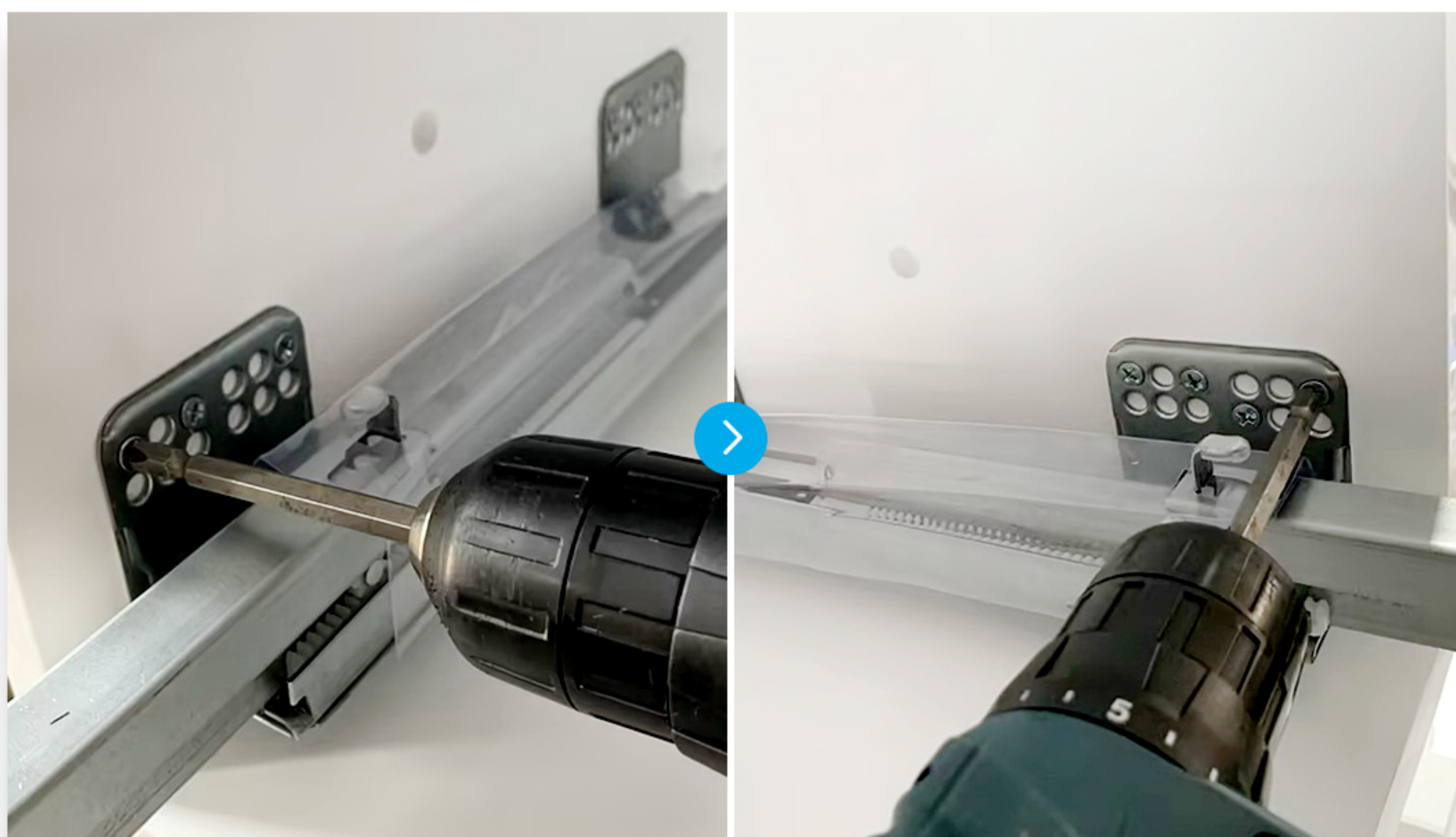
悍高 HIGOLD®



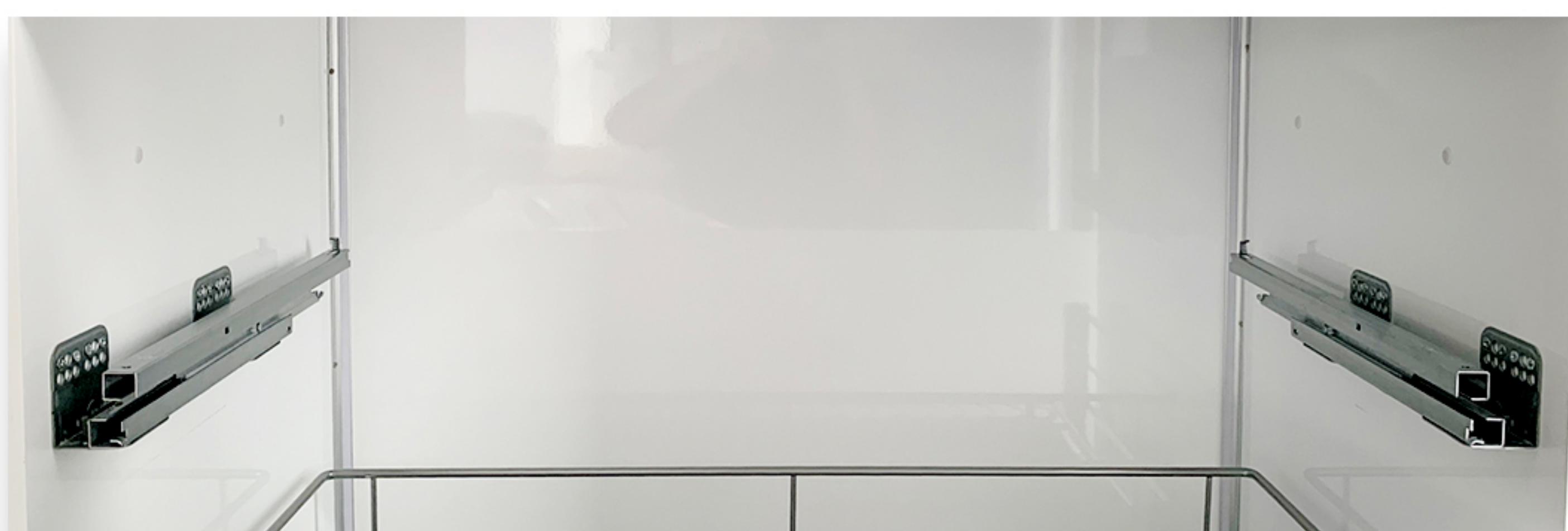
1. 安装滑轨



滑轨预钻孔
模板折边-对齐, 左/右

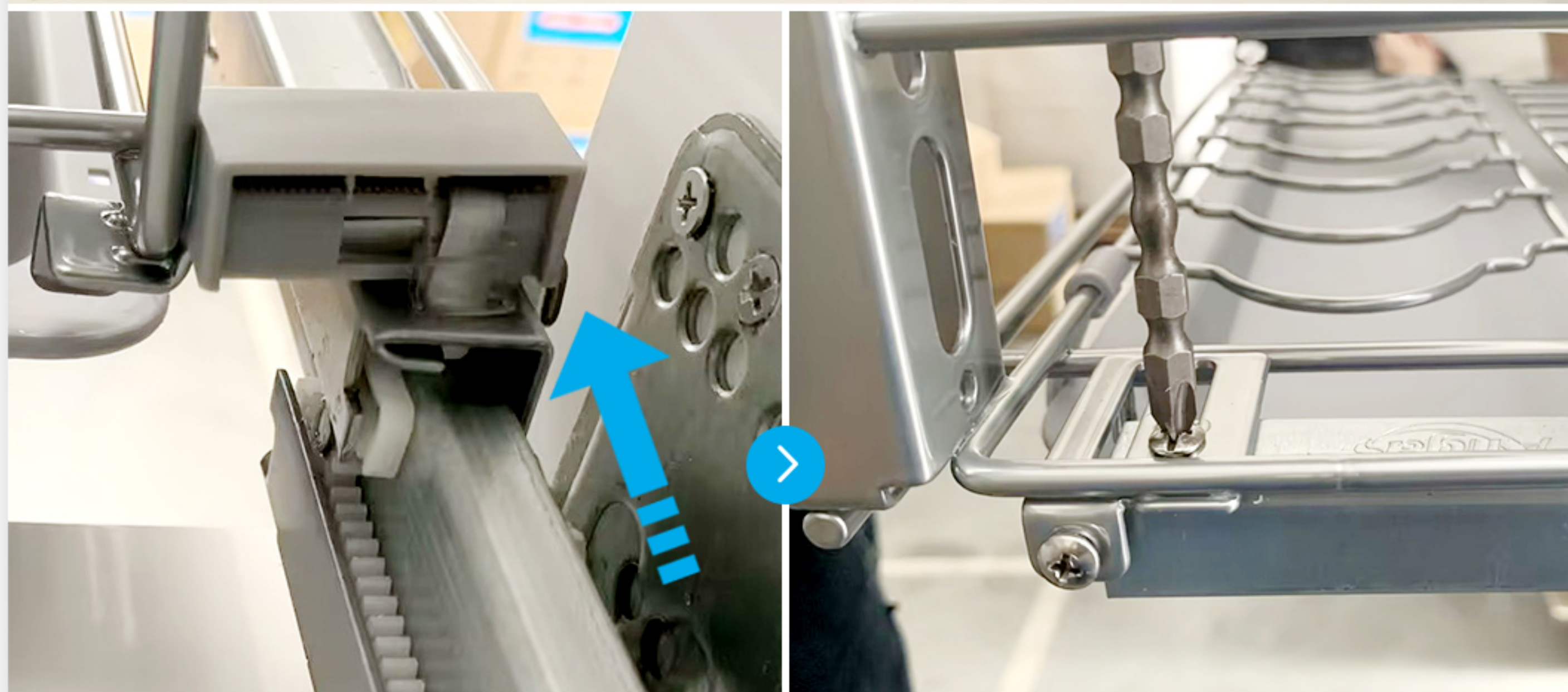


安装滑轨-左右



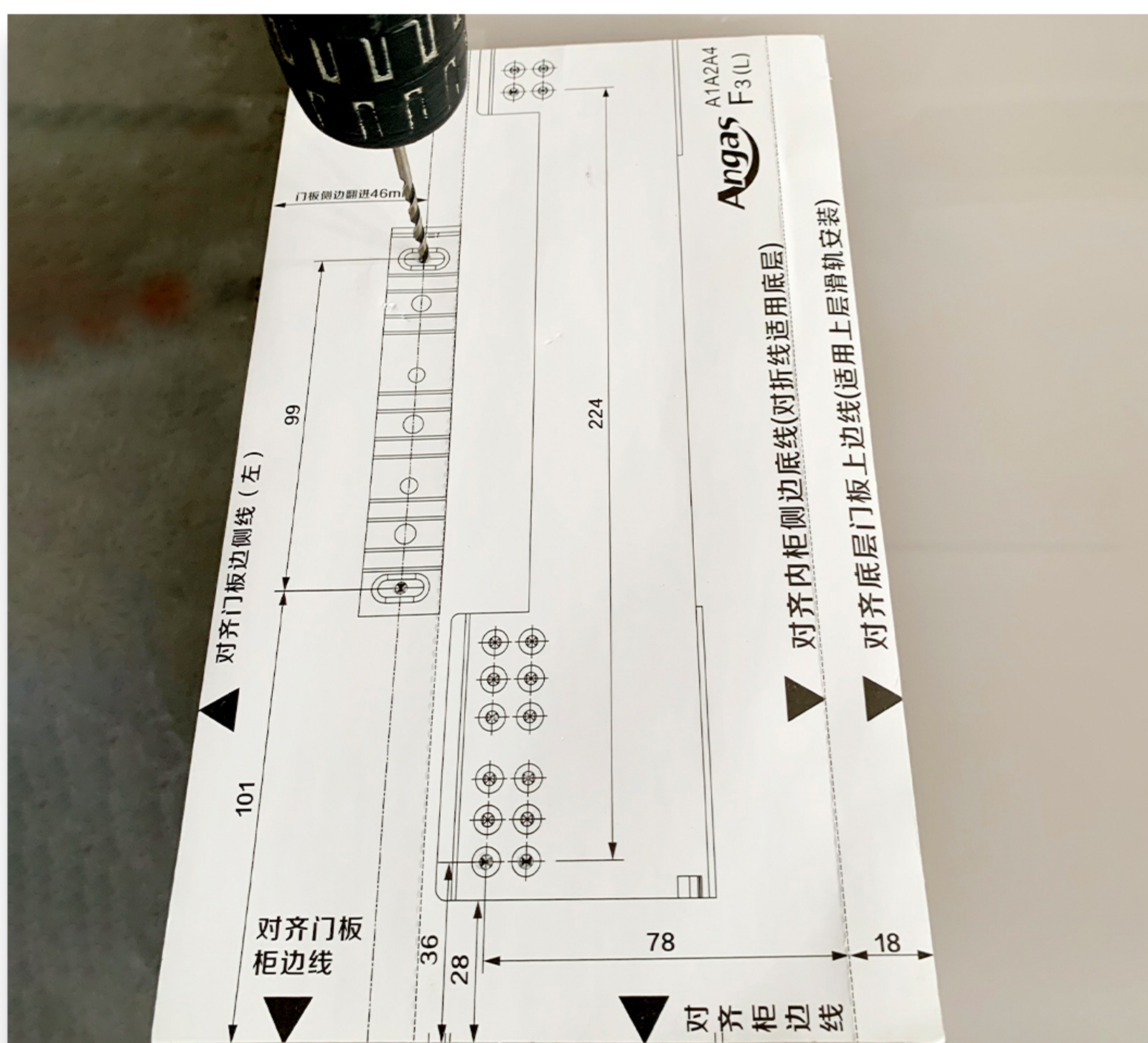
滑轨安装完成

2. 组装篮体

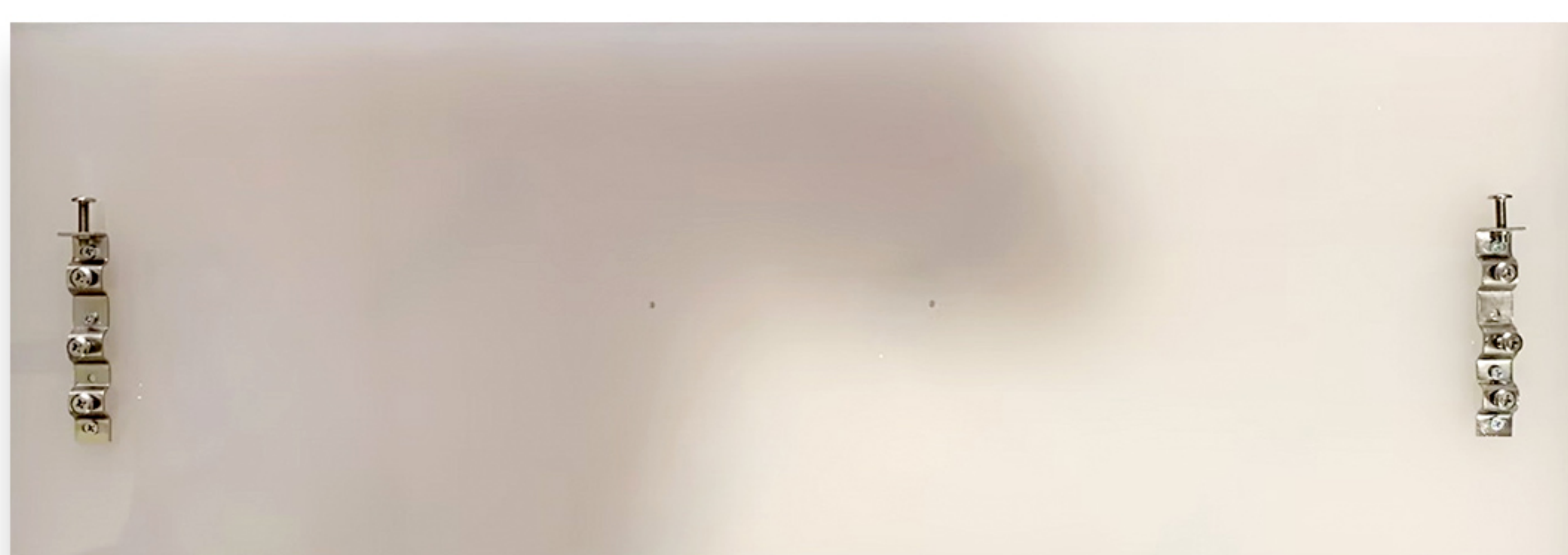


组装篮体（平/碗篮通用）
滑轨尾勾卡入/前端对准滑轨孔 锁紧螺丝

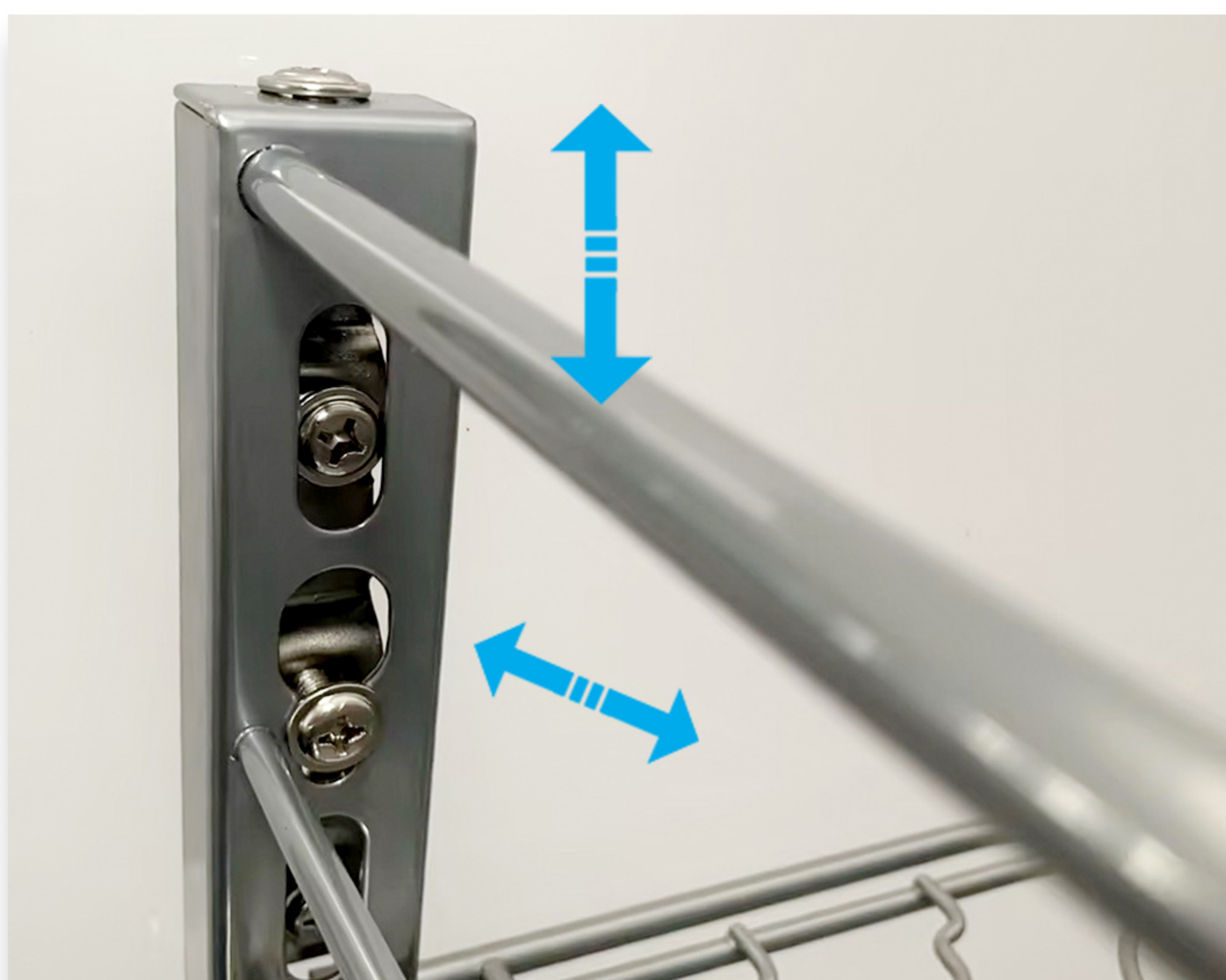
3. 组装门板接件



门板预钻孔-左右

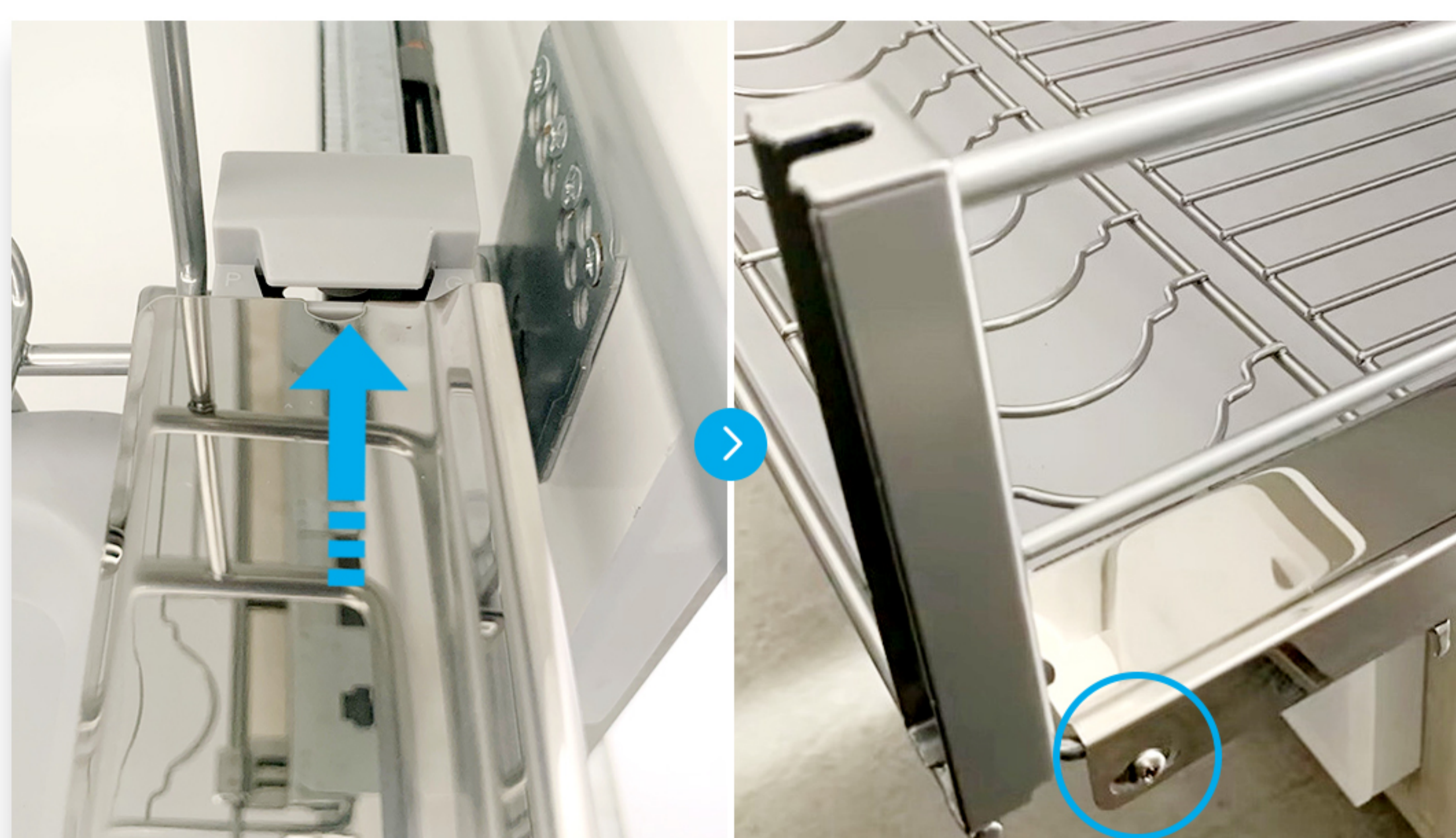


螺丝固定门连接件-左右



组装门板并调整间隙
门板上下、门板倾斜

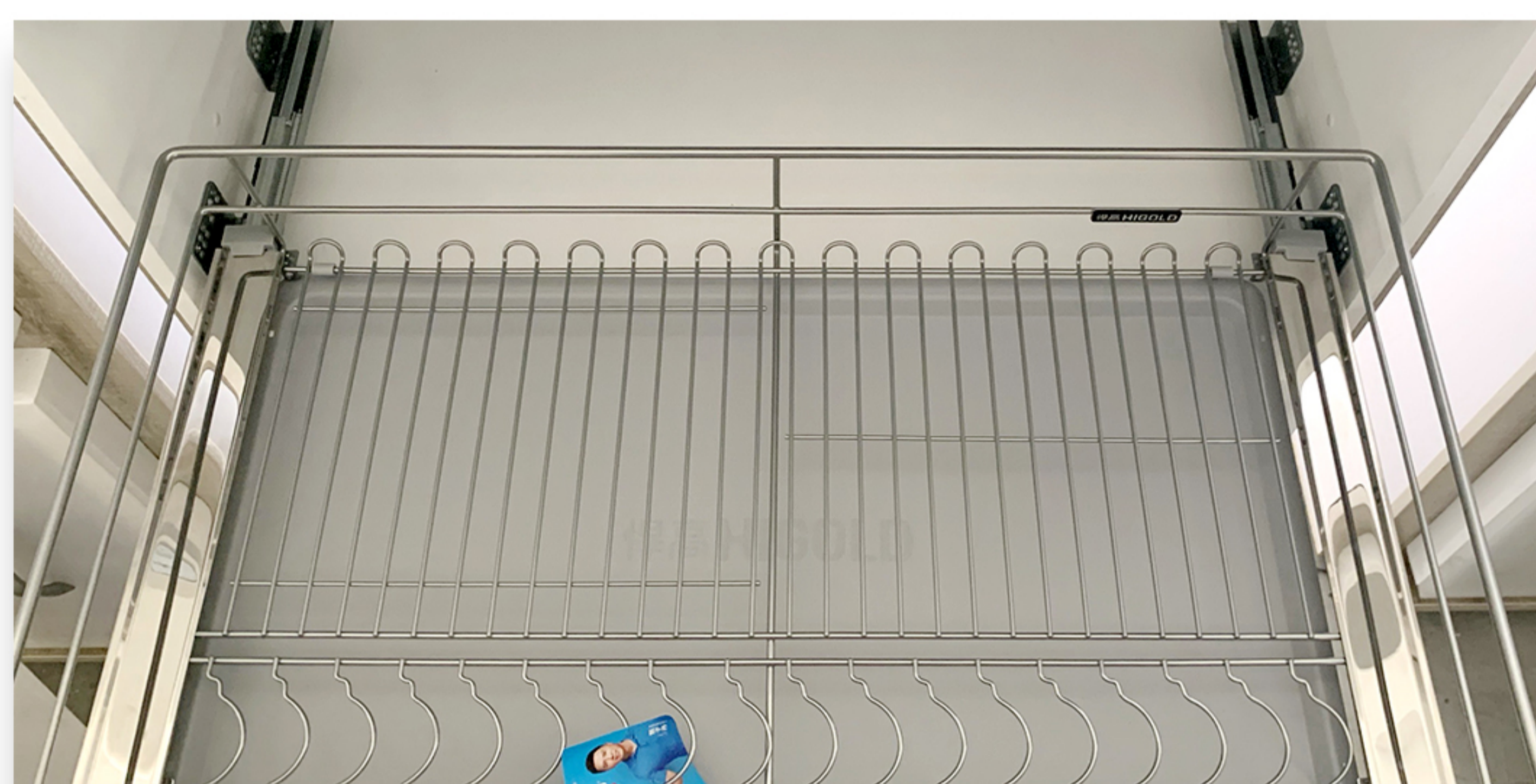
4. 配件组装



组装滑轨左右装饰盖
卡入-锁紧螺丝固定

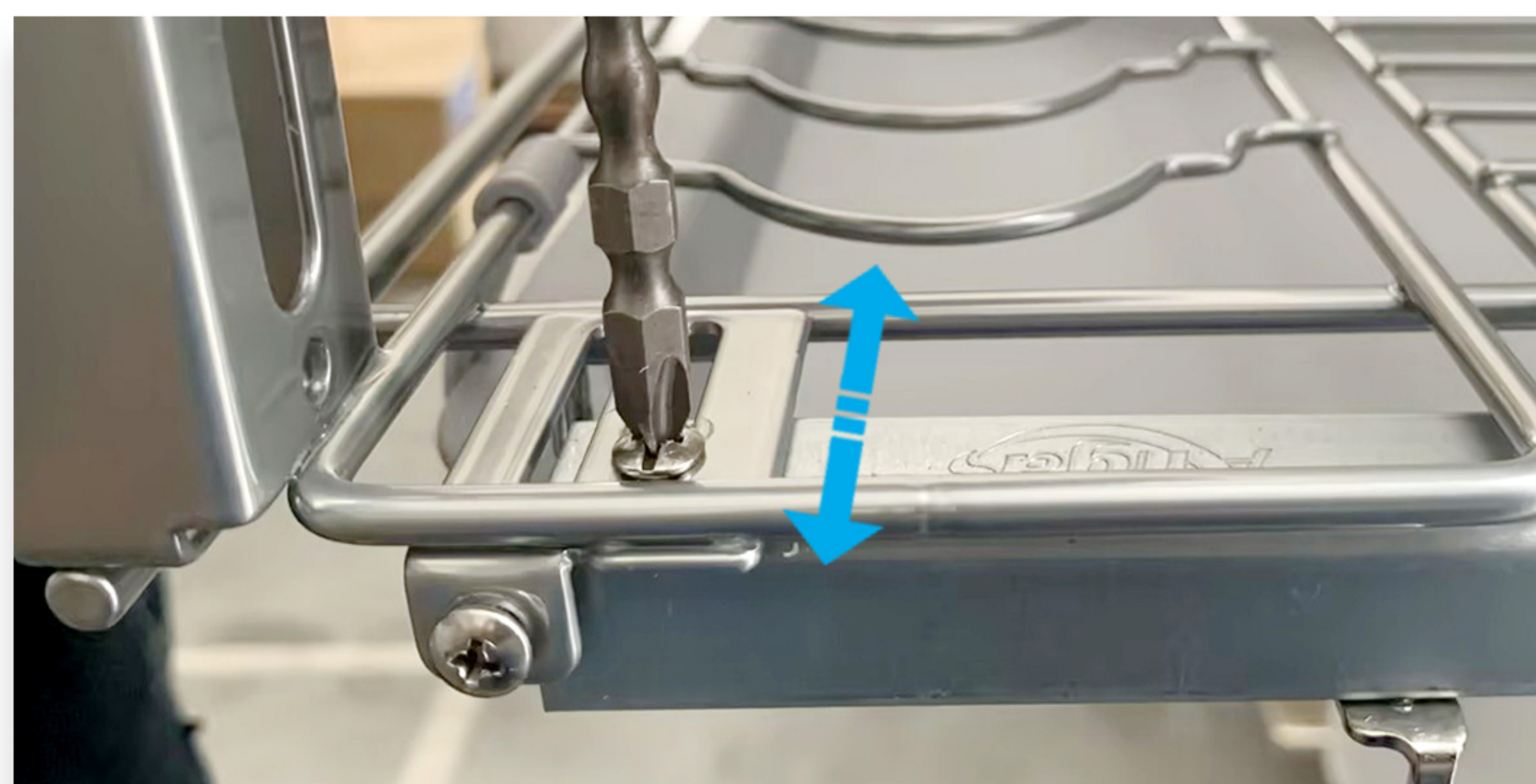


挂上接水盘 4x



安装完成

安装小提示.



若关闭不顺畅，可以左右调节盖板上螺丝